

Nebraska Association for the Education of Young Children, Inc.

NeAEYC Early Childhood Retreat
Mahoney State Park, June 9, 2011

www.NebraskaAEYC.org

"Strengthening and supporting Nebraska's early childhood community since 1976."



National Association for the Education of Young Children

NAEYC

- Largest organization working on behalf of young children
- Nearly 100,000 members world- wide
- Reorganization in 2001-2002

Nebraska AEYC

- Began in the summer of 1976
- About 500 members
- State wide organization
- Became incorporated in 2002



Nebraska AEYC Projects

- T.E.A.C.H. Early Childhood® NEBRASKA
 - CCDF funds: Dec, 2001 - present
 - BBF funds: Jan, 2009 – present
 - ARRA funds: 9/2010 – 10/1/2011
- Quality Enhancement Projects
 - BBF funds: Jan, 2009 – present
 - ARRA Coaching Centers & Coaching FCC: 9/2010 – 10/2011
 - Infant-Toddler Quality Initiative/LAP partnership: Dec, 2008-present
 - Community Services Initiative (Lincoln): July, 2006 – present
- Fiscal Project: Newborn Hearing Loaner Bank fiscal agt: 7/07 -present
- Nature Explore™ Project: Oct, 2006 – present
- Accreditation Facilitation Project: 2006 – present &
ARRA Accreditation: 9/2010 – 10/1/2011



T.E.A.C.H. Early Childhood® Nebraska

Improves early childhood quality through

- Education – AA/AAS, BA, BA “Gap” transition project
- Compensation
- Continuity

Funded for teachers, aides, directors, family child care providers

Funded by

- CCDF funds from HHSS through a contract with NDE
- BBF
- ARRA



T.E.A.C.H. Early Childhood® NEBRASKA is a licensed program of Child Care Services Association



T.E.A.C.H. Data – 2002 - 2009

- **633** participants
 - 425 Teachers/Teacher aides
 - 144 Family Child Care Providers
 - 64 Directors
- 86% accept subsidy
- Earned **11,980.5** credits
- **76** completed AA/AAS, **6** completed BA



T.E.A.C.H. Early Childhood® NEBRASKA is a licensed program of Child Care Services Association



T.E.A.C.H. Planning Teams

- T.E.A.C.H. planning team: Representatives from NDE, HHSS, and ECTC, meets quarterly
- T.E.A.C.H. Advisory Committee: 10-15 members, provide feedback and support for T.E.A.C.H. project, meets three times a year



T.E.A.C.H. Early Childhood® NEBRASKA is a licensed program of Child Care Services Association



Quality Enhancement Projects

Pre & post Environment Ratings Scale, coaching, training, supplies.

BBF Quality Enhancement Project

- 10-12 Family Child Care providers – Greater Omaha Metro area

ARRA Center Coaching Project

- 15 classrooms in 5 centers

ARRA Family Child Care Coaching Project

- 5 Family Child Care providers

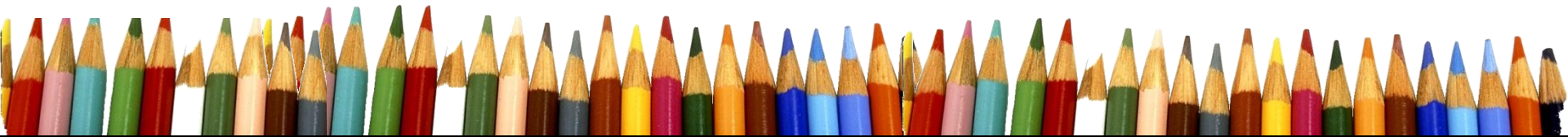
Infant/Toddler Sub-contract with LAP

- 10 Option 1 + Option 2 & 3, ARRA addition



QEP Results: Average increases

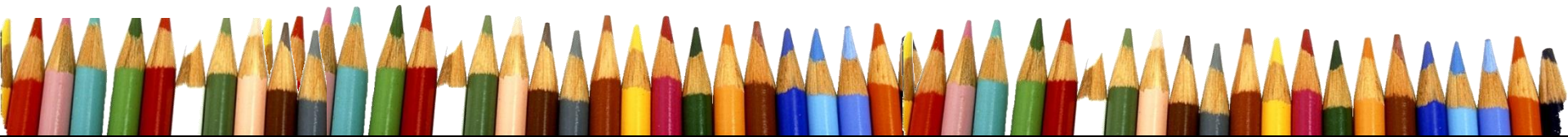
- Early Head Start Infant-Toddler Initiative: Average increase – 32.79%
- Woods Quality Initiative:
 - Average ITERS increase – 32.1 points,
 - Average ECERS increase – 15.1 points
- BBF Quality Initiative:
 - Mostly FCCERS: 46.6% (mostly 1's & 2's in Pre-FCCERS)
 - ITERS: 28.7%,
 - ECERS 9.8%



Accreditation Facilitation Project

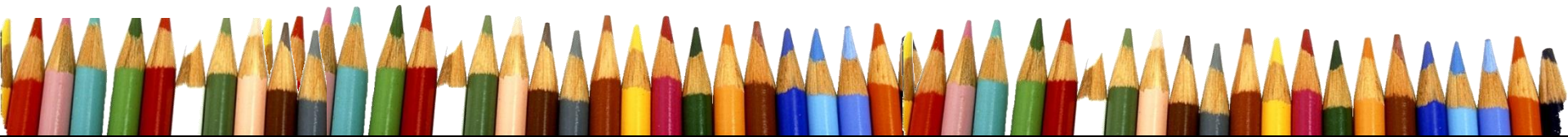
Identified as a national accreditation facilitation project

- Staff support
 - Website/newsletter information & updates
 - Fee based-consultation & training
- ARRA Accreditation Project:
 - Large group activities,
 - Support for limited number of centers,
 - Stipends for centers serving children/families on subsidy



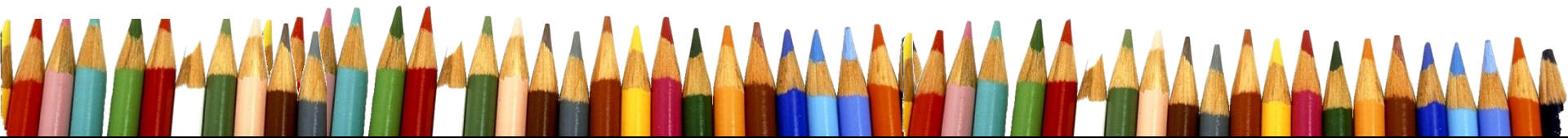
Accreditation Standards

- The Accreditation standards have been revised to remain consistent with best practices
- Increased the value of this quality standard
- Created financial & staffing challenges for centers
- Accredited centers in 2007: 112
- Accredited centers now: 55

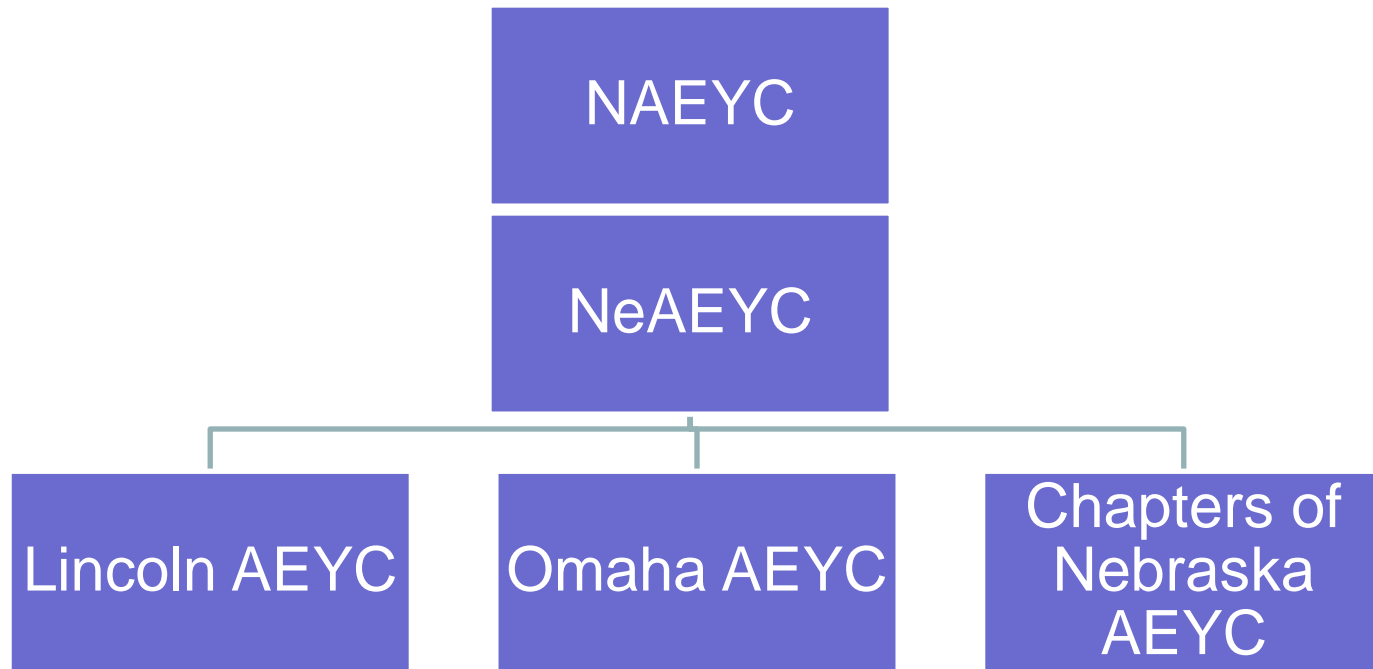


Nature Explore™ Classrooms Project

- Led by the Dimensions Foundation
- 40+ projects in Nebraska
- Creates outdoor learning centers
 - Private child care facilities, public schools, public facilities, Head Start programs, family child care
- NeAEYC provides support & technical assistance:
 - Staff for training and consultation
 - Support for special projects
 - Website with profiles of Nebraska sites

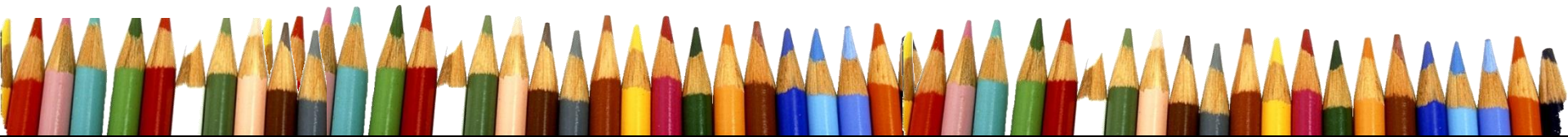


AEYC Organizational Chart

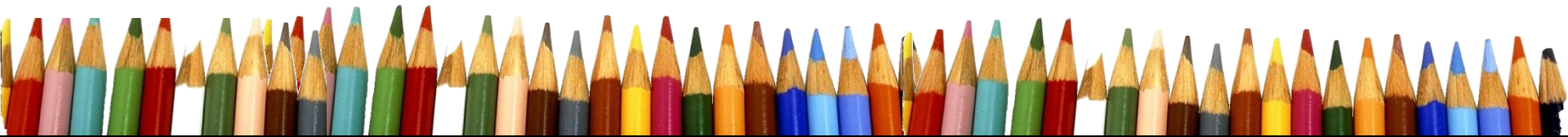
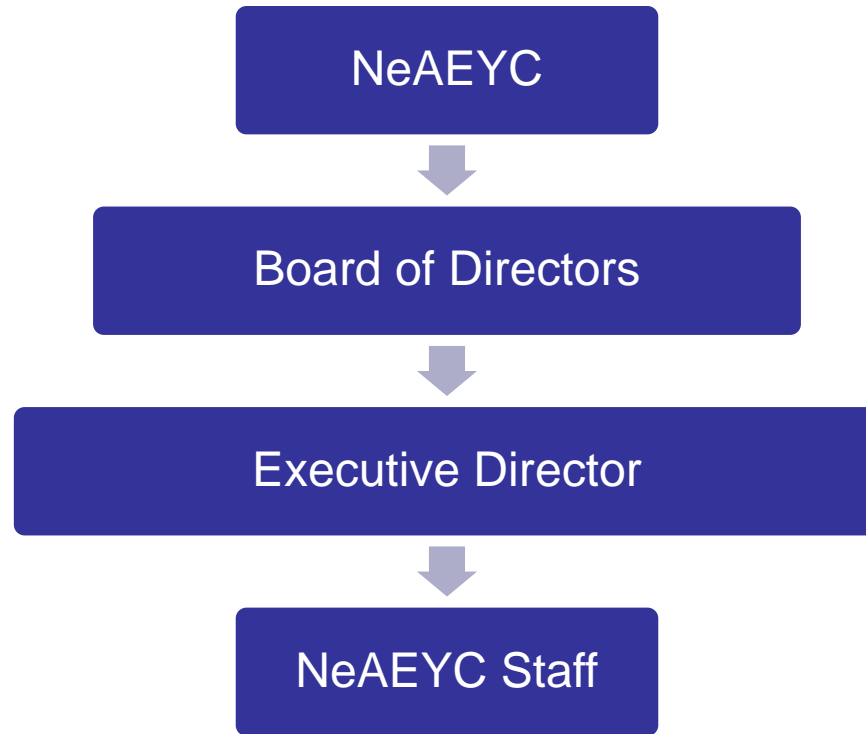


Student Groups: SCC Students,
Metro Students, UNL Students

Chapters: Northeast, Columbus
Kearney, Sarpy/Cass

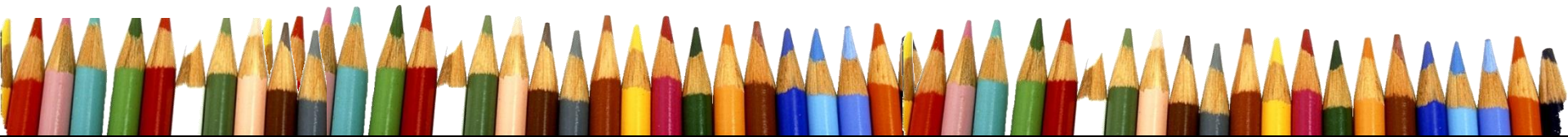


Nebraska AEYC Organizational Chart



NAEYC Membership Benefits

- Young Children Journal &/or Teaching Young Children
- Website – NAEYC.org
- National Conferences/member discounts
- Information about legislative issues
- Access to professional liability insurance
- A voice in the future of EC
- Accreditation system



Nebraska AEYC Member Services

- Early Childhood planning retreat: held at Mahoney, includes broad spectrum of EC representatives
- Week of the Young Child activities
- Annual Report for members & stakeholders
- EC representative on many committees
- Voice for Early Childhood
- Resources – state office has professional resources, books, etc



Nebraska AEYC Member Services

- Advocacy – provides a framework for education and advocacy for EC
 - Legislative Breakfast – Jan, 2009; Feb, 2010
 - Get Out the Vote information
 - Legislative info on Website
 - Children’s art (Remember the Children) distributed to all state and federal legislators



NeAEYC & Technology

- Newsletter: electronic version in 2010 – now 6 times a year
- Website: updated regularly – www.NebraskaAEYC.org
- NeAEYC is now on Facebook
- Survey Monkey gathers EC information
- Webinars provide state-wide training



Distinguished Service to Children

NeAEYC periodically recognizes individuals who have contributed significantly to the early childhood community in Nebraska.

1984: Ruthalee Jorgensen, Lincoln
1985: Paul Welter, Kearney
Dot Boilsen, Omaha
1986: Eloise Dillon, Omaha
Wilma Stutheit, Kearney
1987: Helen Sulek, Lincoln
Millicent Savory, Lincoln
Evie Zysman, Omaha
1988: Harriet Egertson, Fremont
1989: Don Welely, Lincoln
1991: Jeanne Webb, Grand Island
1995: Sally Wysong, Lincoln
1996: JoAnne Begley, Gering
1998: Joyce Kinney, Omaha

2001: Linda Meyers, Lincoln
2004: Terry Rohren, Omaha
2005: Helen Raikes, Lincoln
Kathy Zadina, Columbus
2006: Marcia Corr, Eagle
2007: Michelle Rupiper, Omaha
Alicia Bailey, Lincoln
2008: Carol Fichter, Omaha
Nancy Rosenow, Lincoln
2009: Carolyn Edwards, Lincoln
Deb Nared, Omaha
2010: Jessie Rasmussen, Omaha
Steve Wilson, Hooper



Student recognition

- Began in 2010
- First students recognized:
 - Ivette Pena, Southeast Community College
 - Mercedes Sanchez, Metro Community College



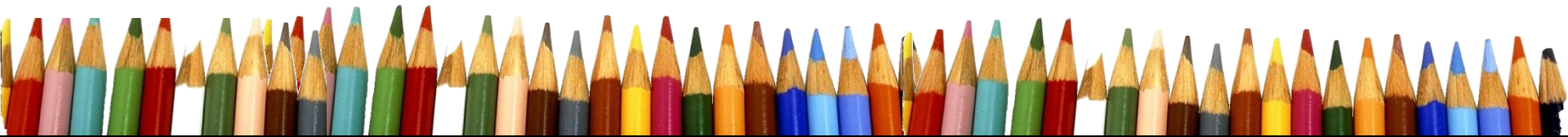
Chapter Support

- Door prizes
- Professional Resources
- Support at meetings, help with organization
- Attend local conferences
- Can do mailings, copying
- Opportunity for chapter info on website (LAEYC has a page)
- Chapter updates in electronic newsletter



Networking, Committee Participation

- Call to Action Team
- Central Comm Coll Advisory Board
- Community Services Leadership Team
- Data Team
- Early Childhood Interagency Coordinating Council (Governor appointed)
- Environment Ratings Scale planning team
- Human Services Fed
- Kids Count Team
- Metro Community College Advisory Board
- Nature Action Collaborative
- Nebraska Head Start Association Board



Networking, Committee Participation

- Nebraska Nature Action Collaborative
- Nonprofit Association of the Midlands
- P-16 Team, Goals 2 & 4, Appointed position
- Public Policy Advocacy Team
- Quality Ratings System
- Region VII Advisory Committee
- Regional Training Project teams – Omaha & Lincoln
- Southeast Community College Advisory Board
- Together for Kids and Families



2001-2011 Projects & Services

2001

- Accreditation
- Advocacy
- Annual board planning
- Conference hosting
- Quarterly newsletter

2011

- Accreditation support & ARRA Project
- Advocacy
- Annual board + stakeholders planning
- Annual Report
- Fiscal Services - New Born Hearing Aid Loaner Bank
- Nature Explore Support
- Quality Enhancement Projects
 - ARRA – 2 projects
 - BBF
 - Community Services Initiative
 - Infant-Toddler
 - Woods Foundation
- Quarterly newsletter
- T.E.A.C.H. Early Childhood® NE – 3 funders
- Technology – website, Facebook, newsletter, etc



2001-2011 Funding Sources

2001

- Accreditation funds
(nearly all pass-through funds)
- Conferences
- Dues
- Interest - CD

2011

- ARRA funds – 4 projects
- Building Bright Futures grants
- Community Services Initiative grant
- Contract labor (from staff services)
- Dimensions contract labor
- Donations
- Dues
- Fundraising campaigns
- Interest - CD
- LAP contract (Infant/Toddler Initiative)
- NAEYC grants
- NBHALB Fiscal Contract
- T.E.A.C.H. HHSS/NDE Contract



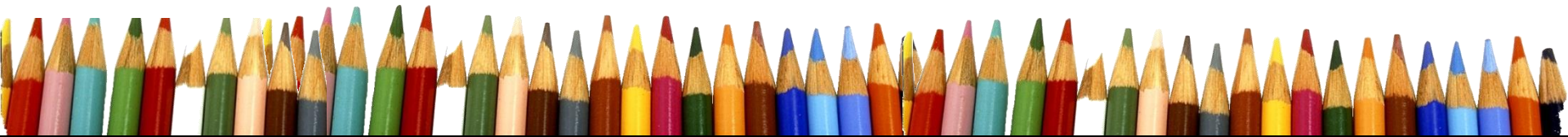
2001-2011 Staffing

2001

- All volunteer organization on state level

2011

- Executive Director
- T.E.A.C.H. Coordinator
- 3 Special Projects Coordinators (one ½ time)
- Part-time Office Manager
- Part-time Office Assistant
- Part-time Accountant



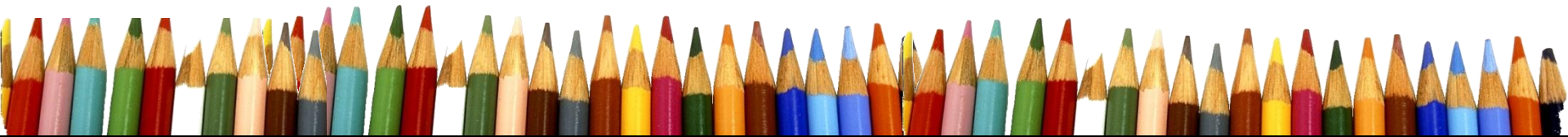
2001-2011 Board of Directors

2001

- All involved closely in the early childhood field

2011

- Over half representing chapters or at-large
- Other members include
 - Accountants
 - Attorneys
 - Community organizations
 - Higher education
 - Public school, etc



NE AEYC Board of Directors

Chapter reps

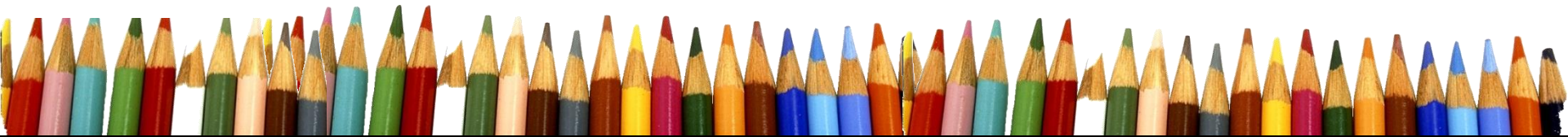
- 2 – OAEYC
- 2 – LAEYC
- 3 – Small chapters
- 2 – At large

Total: 9

Other representatives

- 1 - Public Schools
- 1 - Advocacy/Legal
- 1 – Head Start
- 1 - Fiscal
- 3 - Community Representatives
- 1 - Higher Ed

Total: 8



2011 Board Committees

- Executive Committee:
 - President, Dawn Mollenkopf;
 - President Elect, Michelle Rupiper;
 - Secretary, Pat Enevoldsen;
 - Treasurer, Linda Sullivan
- Finance: Linda Sullivan (C), Kim Madsen, Jose Zapata, Shelley Kahrs
- Human Resources: Sue Ellen Wall (C), Linda Maslowski
- Advocacy/Public Awareness: Sarah Ann Kotchian (Ex-officio)(C), Deb Ross, Sarah DeWald
- Chapter Activities: Jen Haggart (C), Pat Enevoldsen, Karen Decker, Kathy Zadina, Crystal Kozak, Gina Battey
- All committees: Dawn Mollenkopf, Michelle Rupiper
- NAEYC/Midwest AEYC representative: Dawn Mollenkopf

C = Chair



Nebraska AEYC Staff

- Executive Director: Linda Zinke
- Office Manager: Pat Hoffschneider
- T.E.A.C.H. Early Childhood® Manager: Brandee Lengel
 - T.E.A.C.H. Assistant: Connie Fishburn
- Special Projects Coordinators:
 - Tracy Gordon
 - Gina DeFreece
 - Cindy Jennett
- Accountant: Jennifer Harris



*"A dream you dream alone is only a dream.
A dream you dream together is reality."
-John Lennon*



CHILDREN . . . THE HEART OF THE MATTER

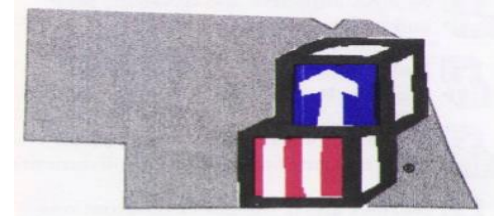
© 1988 NeAEYC

Nebraska Association for the Education of Young Children, Inc.

An affiliate of the National Association for the Education of Young Children



OFFICE OF HEAD START



Retreat sponsored by Nebraska AEYC, Nebraska Head Start Association,
& Nebraska Head Start State Collaboration Office

