

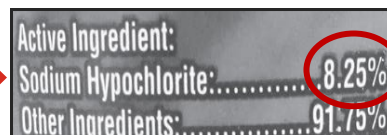
MIXING BLEACH

For Body Fluid Clean Up (Vomit/Diarrhea)



1 USE CONCENTRATED BLEACH

- 8.25% sodium hypochlorite.
- Purchase unscented bleach.



2 MIX "SPECIAL CLEAN UP" BLEACH SOLUTION

- Use room temperature water.
- Add bleach to water (rather than water to bleach) to reduce fumes.
- *Never mix bleach with other cleaning products, disinfectants and/or ammonia.* Mixing these chemicals may release poisonous gases into the air.

3 CLEAN

- Clean surfaces with soap and warm water. Rinse.
- Always clean surfaces to remove visible dirt and contamination before using bleach solution.

4 DISINFECT CONTAMINATED SURFACES WITH "SPECIAL CLEAN UP" BLEACH SOLUTION

1. Wet entire surface with "Special Clean Up" bleach solution.
2. Leave "Special Clean Up" solution on surface for **5 minutes**. **Special clean up requires 5 minutes.*
3. Air dry. *(If air drying is not possible, wait at least five minutes and wipe dry.)*

SPECIAL CLEAN UP (FOR VOMIT & DIARRHEA) (5000 PPM)

4 tablespoons bleach / quart water or

1 cup bleach / gallon water

MIX SOLUTION WHEN NEEDED.

WEAR GLOVES AND MASK TO PROTECT YOURSELF.

**If chlorine bleach is not used, it is important to use a disinfectant EPA registered effective against norovirus. The Environmental Protection Agency (EPA) keeps a list of registered disinfectants on its website. Follow manufacturer's directions for concentration and contact time.*

EPA registered norovirus disinfectants: <http://www.epa.gov/> Search: Norovirus Disinfectant List



For more information on bleach solutions or to request a health consultation visit and bleach pumps for mixing bleach safely, contact 402-441-6220 or healthychildcare@lincoln.ne.gov

Nebraska AEYC

