

2011 Annual Report

Nebraska Association for the Education of Young Children, Inc.

 **CHILDREN ... THE HEART OF THE MATTER**
Nebraska Association for the Education of Young Children, Inc.
An affiliate of the National Association for the Education of Young Children

ALYSSA

Thanks for investing in children!



ALYSSA
Child's First Name Only

HALL
County

www.NebraskaAEYC.org



CHILDREN ... THE HEART OF THE MATTER
© 1988 NeAEYC
Nebraska Association for the Education of Young Children, Inc.
An affiliate of the National Association for the Education of Young Children

Strengthening and supporting Nebraska's early childhood community since 1976

Original art provided by children in T.E.A.C.H. Early Childhood® NEBRASKA scholarship recipient classrooms

*To the members, friends and supporters of the
Nebraska Association for the Education of Young Children, Inc.*



*This is the 9th annual report produced by Nebraska AEYC, Inc.
We are pleased to provide this report and
hope it will be of interest to you.*



*This past year has been a year of accomplishments and growth, as we
added new projects and continued to provide high quality in all of our
programs and services.*

*We continue to direct our efforts and resources toward strengthening and supporting the
early childhood community. Early childhood is a critical piece of Nebraska's infrastructure,
and high quality early care and education is so important for Nebraska's children, families, and communities.*

*If you have any questions, please contact either:
Dawn Mollenkopf, 308-865-8362, mollenkopfdl@unk.edu
Linda Zinke: 402-476-2089, lzinke@NebraskaAEYC.org*

Dawn Mollenkopf, Board President

Linda Zinke, Executive Director

2011 DISTINGUISHED SERVICE TO CHILDREN AWARD



Sue Obermiller, Head Start Director for Central Nebraska Community Services at Loup City, was a recipient of the Distinguished Service to Children Award.

Sue has been a tireless advocate for children and families in her programs, Nebraska, and the United States. She has served on the Region VII and National Head Start Board of Directors, Early Childhood Interagency Coordinating Council, Reading First Team, Early Learning Guidelines Team, and the Early Childhood Study team. The award was presented at the Nebraska Head Start Association Conference in Grand Island.



Kim Madsen, ED, Director of the Chadron State College Child Development Center, was a recent recipient of the Distinguished Service to Children Award.

A life-long educator, Kim has passionately served the world of early childhood education. She has been recognized for outstanding leadership in campus child care by the National Coalition of Campus Child Care, served on the Governor's Early Childhood Interagency Coordination Council, and recognized as an Outstanding 4-H Alumni and leader. The award was presented at the Excellence in Early Childhood Conference in Chadron.

NEBRASKA AEYC

Nebraska Association for the Education of Young Children, Inc. is a state affiliate of the National Association for the Education of Young Children. It began in 1976 and is organized as a 501(c)(3) nonprofit corporation which is led by a Board of Directors. Membership is open to anyone interested in supporting and promoting the mission of the organization. The membership fee includes membership in the local, state, regional, and national AEYC organizations.

*"Let us put our minds together and see what life we can make for our children."
Sitting Bull*

STRUCTURE OF NEBRASKA AEYC

Nebraska AEYC is a state affiliate of National AEYC, the largest early childhood association in the world. NeAEYC is structured as follows:

Two local affiliate chapters:

- Lincoln AEYC: 164 members
- Omaha AEYC: 203 members

Small chapters of the Nebraska AEYC:

- Columbus Chapter of Nebraska AEYC: 7 members
- High Plains Chapter of Nebraska AEYC: 11 members—**NEW in 2011!!**
- Northeast Chapter of Nebraska AEYC: 33 members
- Kearney Chapter of Nebraska AEYC: 30 members
- Sarpy/Cass Chapter of Nebraska AEYC: 13 members
- Southeast Chapter of Nebraska AEYC: 28 members—**NEW in 2011!!**
- Independent members: 7 members
- At-large members are unaffiliated with any chapter: 47 members
- **Total members: 543**

PROJECTS

- Accreditation Support Project
- Community Collaboration Project: Community Services Init, Lincoln
- Fiscal Agent: Newborn Hearing Aid Loaner Bank, Ne Nature Action Collab
- Quality Enhancement Projects: Woods Charitable Fund (Lincoln) Building Bright Futures (Omaha) Infant-Toddler Quality Initiative (Lincoln) Coaching Centers—ARRA Coaching Family Child Care—ARRA
- T.E.A.C.H. Early Childhood® NEBRASKA: HHSS/NDE, Building Bright Futures, Buffett Early Childhood Fund, American Recovery & Reinvestment Act (ARRA)

SERVICES

- Advocacy & Public Awareness
- Annual Report
- Conference Support
- Chapter Development & Support
- Early Childhood Planning Retreat
- Facebook page
- Homeless Connect
- Legislative Breakfast
- Regular Newsletter
- Staff Training & Technical Asst
- State website - www.NebraskaAEYC.org
- Voice for Early Childhood
- Week of the Young Child Mini-Grants

www.NebraskaAEYC.org

2011 STRATEGIC PLANNING RETREAT

The planning retreat was held in June at Mahoney State Park. The retreat was very well attended, with nearly 50 people representing many organizations throughout Nebraska. Four teams, a T.E.A.C.H. Early Childhood® NEBRASKA team, an Advocacy/Public Awareness team, a Quality Initiatives team, and a Chapter Development team met and developed goals, including:

- Explore avenues to collect longitudinal data on children
- Promote the Early Childhood Registry
- Explore ways to partner with Nebraska Family Child Care Association
- Explore partnerships with the Buffett Institute and UNL
- Explore ways to gather more information about education and compensation initiatives
- Celebrate the 100th T.E.A.C.H. graduate
- Support student groups and student leadership
- Outreach to preschool teachers in grant funded projects & kindergarten teachers

STUDENT CHAPTERS

- Metro Community College
- SouthEast Community College
- University of Nebraska at Lincoln

STUDENT LEADERSHIP AWARDS



Roseanna Conley, Metro CC student

Roseanna has been active in organizing events and encouraging others to join. She was appointed Director of Volunteer Services in the Service Learning Area.



Brittney Cambern, Southeast CC student

Brittney is Secretary of the student group; she is passionate about incorporating best practices, and mentors fellow students.



Angela Rippe, Southeast CC student

Angela served as Vice President of the student group. She hopes to open her own in-home care business after graduation.

**T.E.A.C.H. NEBRASKA
2011 STATISTICS**

Ethnicity

White 69%
African American 17%
Hispanic 8%
American Indian 1%
Asian 1%
Other 1%
No Response 3%

Employment Positions

Director Employee 4%
Director Owner 3%
Family Child Care 26%
Teachers/Aide 67%

Employment Locations

Public School 2%
Faith Based 11%
Head Start 13%
Non Profit 21%
For Profit 53%

Compensation

The average salary increase for teachers was **over 7%.**

Students Participate in 12-month Contracts

Contract #1	29%
Contract #2	23%
Contract #3	19%
Contract #4	13%
Contract #5	7%
Contract #6	6%
Contract #7	1%

In 2011, T.E.A.C.H. students earned:

**1,290
semester credits**

(For data purposes, quarter credits are converted to semester credits)

Student Grade Point Average:

3.54 (B+)

T.E.A.C.H. Early Childhood® NEBRASKA

Studies of quality early childhood care and education programs indicate the best quality programs are those where staff are well educated and turnover is low. T.E.A.C.H. Early Childhood® is designed to provide scholarship funds for those working with young children. Each scholarship addresses three key issues facing those in the early care and education field:



The education level of staff • High turnover rates • Low salaries

Nebraska became a “T.E.A.C.H. state” in 2001, and began providing scholarships in 2002. During 2011, T.E.A.C.H. Early Childhood® NEBRASKA served:

190 students in 41 counties

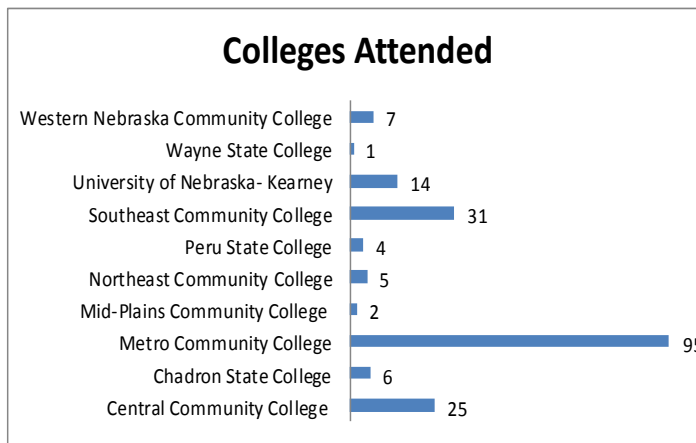
Education

T.E.A.C.H. NEBRASKA offers scholarships for both Associate Degrees & Bachelor Degrees.

To help “bridge the gap” between the AAS degree and the university system, students can participate in a BA GAP Model, which allows them to continue at the community college while earning general education credits.

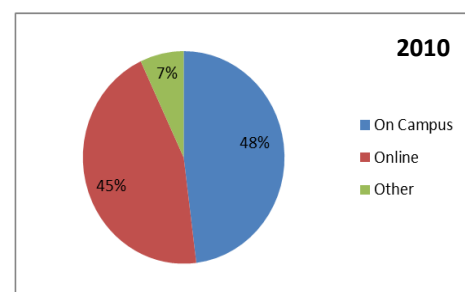
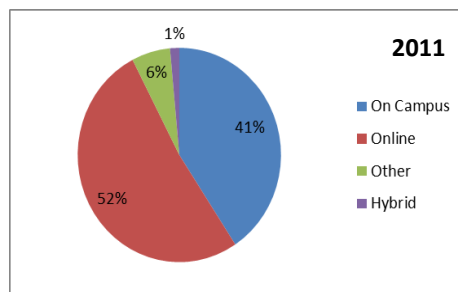
For 2011:

- 23% of the students were working toward a Bachelor Degree
- 77% of the students were working toward an Associate Degree



Course Delivery Methods

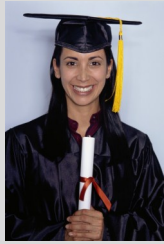
The students access classes in a variety of methods. We have seen a shift in the number of students accessing alternative course delivery methods. Below you can compare the data from 2010 to 2011. We are also now tracking hybrid classes which are typically a combination of on campus and online. The “other” category includes: independent study, credit for experience, and other distance education classes.



**CONGRATULATIONS
2011 GRADUATES!**

13 Students completed an Associate Degree

1 Student completed a Bachelor Degree



85% of T.E.A.C.H. Programs accept Child Care Subsidy

The average **turnover** rate for T.E.A.C.H. Nebraska students is **5%**

**Funding For
T.E.A.C.H.
Early Childhood®
NEBRASKA**

- Nebraska Health and Human Services System
- Nebraska Department of Education
- Buffett Early Childhood Fund
- Building Bright Futures Foundation
- American Recovery & Reinvestment Act
- Private donations

Survey Question: What has the T.E.A.C.H. Scholarship meant to you?

"It has given me direction and confirmed my decision to stay in the field of early childhood." T.E.A.C.H. Recipient, Douglas Co Teacher

"It has allowed me to go back to college and get my degree, a dream and goal of mine." Nuckolls Co Teacher

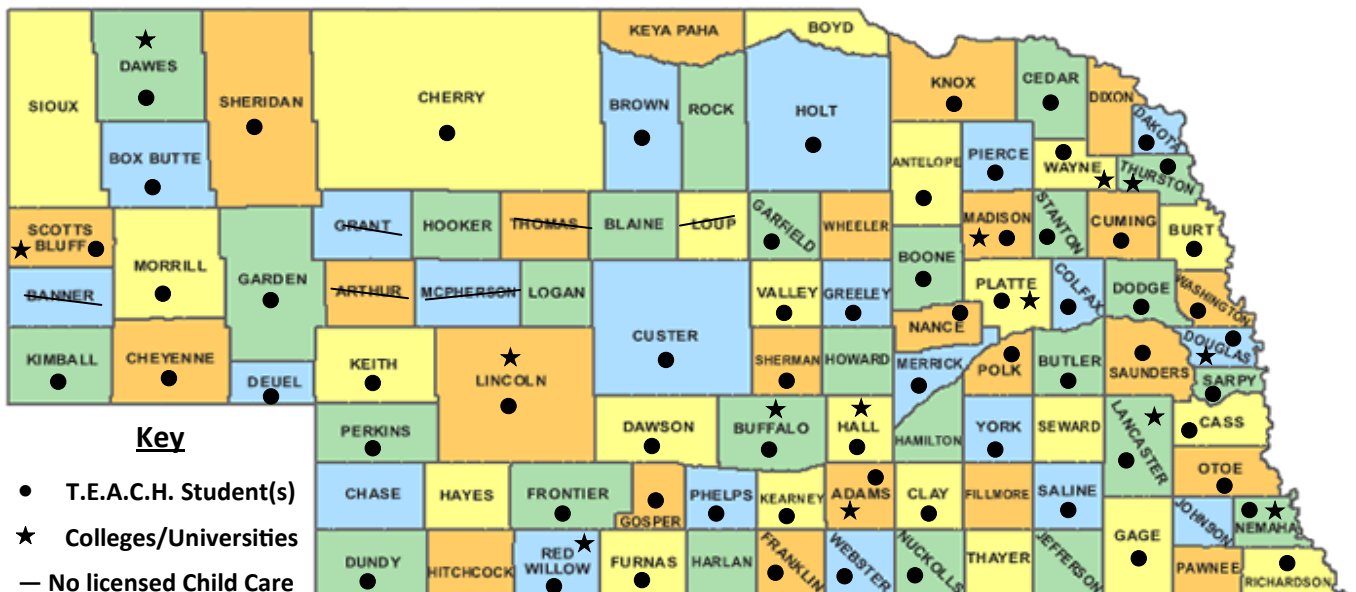
"I really don't know how to express enough what this scholarship has meant to me. I am a changed person. I had uncertainty before beginning my college education. I have confidence, I am more secure in what I do. I feel excited to learn. I feel good about who I am." Buffalo Co Family Child Care Provider

T.E.A.C.H. Early Childhood® NEBRASKA is a licensed program of Child Care Services Association

**T.E.A.C.H. Early Childhood® NEBRASKA
Highlights 2002-2011**

- Since 2002, **717** Nebraska child care providers have been awarded a T.E.A.C.H. scholarship.
- They live in **66** different Nebraska counties.
- They work in **378** different Nebraska child care programs.
- **15,601** college credits were taken from 2002-2011.
- **43%** of those T.E.A.C.H. students were minorities.
- The average T.E.A.C.H. student was **36** years old.
- **111** students have graduated with an Associate Degree or Bachelor Degree while on a T.E.A.C.H. scholarship.

Statewide T.E.A.C.H. Students by County 2002-2011



Copyright 2005 digital-topo-maps.com

QUALITY ENHANCEMENT PROJECTS

Environment Ratings Scales completed by staff in 2011:

ECERS: 14

ITERS: 57

FCCERS: 56

TOTAL: 127

Total NeAEYC QEP participants 2011:

- 18 Family Child Care providers
- 19 Classrooms

"I have learned and grown in this experience."

Lincoln Family Child Care Provider



"I love the program, it has really made me want to do so much better for myself and the children."

Omaha Family Child Care Provider

"We had an awesome experience. She helped us out a lot and gave us ideas we would have never thought of!"

Lincoln Child Care Center



NeAEYC Quality Initiatives all have a similar format. They combine a pre and post Environment Ratings Scale (ERS) with the development of a quality improvement plan, coaching, training, and supplies for both children and professional development. The Environment Ratings Scales are either ITERS (Infant-Toddler), ECERS (Early Childhood), or FCCERS (Family Child Care). The ERS ranks 38-39 items on a scale of 1-7, with 1 being the lowest and 7 the highest.

INFANT-TODDLER ENVIRONMENT RATINGS SCALES (ITERS), 2011

The category with the lowest consistent scores was the category of Personal Care Routines. This includes greeting/departing, meals/snacks, nap, diapering/toileting, health practices, and safety practices. 12 participants completed both the pre and post ITERS. Most scored high numbers in the greeting/departing category, but consistently low numbers in the balance of this area, with only 4% of those scores higher than a 2.

Support for Personal Care Routines includes: Modeling of proper diapering techniques, handouts highlighting best practices and healthy habits, Purchase of nap mats, diapering mats; training on meal times for health measures as well as using meals as a social learning opportunity.

FAMILY CHILD CARE ENVIRONMENT RATINGS SCALES (FCCERS), 2011

The category of Personal Care Routines also was low scoring for the family child care providers. Another category scoring low was the category of Activities. 15 family child care providers completed both the pre and post FCCERS. All 15 had scores of 1 or 2 in the pre-FCCERS in the sub-category of Active Physical Play. The category scoring the highest was the category of Listening and Talking. Sub-categories include Helping Children Understand Language and Using Books.

Support for Personal Care Routines includes: Introducing new materials to foster exploration & discovery; use of video-recording/analysis of teacher/child interactions; coaching conversations on sanitization, hand washing and social learning.

EARLY CHILDHOOD ENVIRONMENT RATINGS SCALES (ECERS), 2011

6 classroom teachers completed both the pre and post ECERS. In the Space and Furnishings Category, the sub-categories of Space for Gross Motor, and Gross Motor Equipment all received nearly all 1's and 2's. Additional low scores were in the Activities sub-categories of Music/Movement and Art.

Support for active plan and safety includes: education regarding the requirements of the ECERS as well as an introduction to the National Playground Safety Guidelines; coaching on supervision, play equipment, safety including ground cover and equipment spacing.

QUALITY ENHANCEMENT PROJECT PARTNERS, 2005—2011:

- **American Recovery & Reinvestment Act**
- **Building Bright Futures**
- **Community Action Partnership of Lancaster & Saunders Counties**
- **Lincoln Community Foundation**
- **Nebraska Department of Education**
- **Woods Charitable Fund**

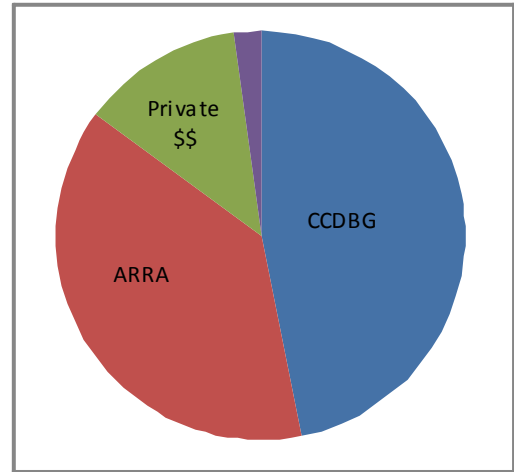
Total NeAEYC QEP participants 2005-2011

- 136 Classroom Teachers
- 80 Family Child Care Providers

WE RECEIVED FUNDING FROM:

Nebraska AEYC receives funding from several sources.

- **Child Care Development Block Grant:** This includes funding for T.E.A.C.H. Early Childhood, the Infant Toddler Initiative, and Newborn Hearing fiscal project
- **ARRA (American Recovery & Reinvestment Act):** Includes funds for T.E.A.C.H. Early Childhood, Quality Enhancement, and Accreditation
- **Private Donations:** Includes funds for T.E.A.C.H. Early Childhood and Quality Enhancement
- **Other:** Includes dues, small donations, Community Services Initiative, interest income, and staff contract labor

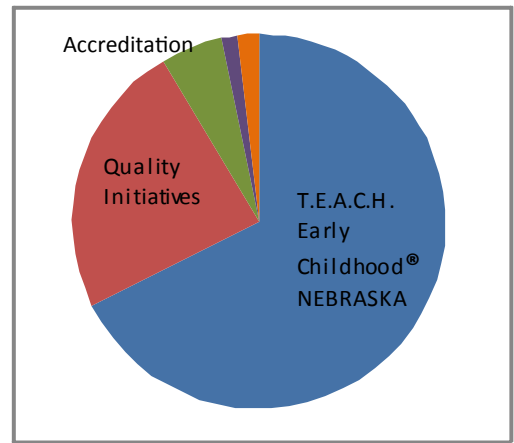


WE SPENT THE FUNDING ON:

Nebraska AEYC receives funding for general management and for various projects.

The following chart identified the funding allocation:

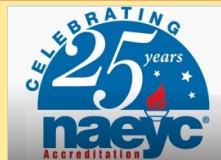
- **T.E.A.C.H. Early Childhood® NEBRASKA:** All funding for our largest project
- **Quality Initiatives:** Quality Enhancement Projects, Infant/Toddler Initiative
- **Accreditation:** Support to centers, including stipends
- **Other:** Fiscal Management, Community Collaboration Projects
- **General funding:** includes dues, interest income, small unallocated donations, and contract labor provided by staff



ACCREDITATION

NAEYC ACCREDITATION

In 1985, NAEYC established a national, voluntary accreditation system to set standards for early childhood education programs, and to help families identify high-quality programs.



In 2006 the accreditation standards were significantly modified to create a system with greater consistency and higher standards. The changes have impacted the number of centers in Nebraska and the country that are accredited.

NeAEYC provided support through large group meetings, as well as coaching and support to individual sites. ARRA funds also rewarded accredited centers serving low income children and families.

ACCREDITATION

of Accredited Centers in Nebraska:

2007:	112
2008:	87
2/20/09:	69
2/15/10	59
1/25/11	65
2/9/12	57

TECHNOLOGY

www.NebraskaAEYC.org

During 2011, the most popular pages were:

- T.E.A.C.H. Early Childhood® NEBRASKA
- Calendar
- Job Postings
- About Us
- Board Information
- Affiliates/Chapters/Students

There were a total of **18,289 Pageviews** on the website. 11,930 were Unique Pageviews. In addition to the United States, **visitors were from 61 countries/territories**, including Russia, Ukraine, Canada, and Brazil.

115 people currently “like” us on facebook.

Survey Monkey helped us gather information and elect board members.

BOARD OF DIRECTORS JANUARY 1, 2011 - DECEMBER 31, 2011

Executive Committee

President: Dawn Mollenkopf, PhD, Associate Professor, University of Nebraska at Kearney
President Elect: Michelle Rupiper, PhD, Director, Ruth Staple Lab, UNL, Lincoln
Secretary: Pat Enevoldsen, Instructor, Southeast Community College, Lincoln
Treasurer: Linda Sullivan, Finance Manager, Family Service, Lincoln

Members

Gina Battey, Rainbow Factory Preschool, Omaha
Karen Decker, Sugar & Spice Child Care Center Director, Kearney
Jennifer Haggart, Coordinator, ECCOA, Omaha
Shelly Kahrs, Principal, Franklin Public Schools
Crystal Kozak, Instructor, Southeast community College, Lincoln
Kim Madsen, ED, Professor, Chadron State College, Chadron
Linda Maslowski, Consultant, Lincoln
Deb Ross, Executive Director, Child & Family Development Program, Hastings
Sue Ellen Wall, JD, Attorney, Wall Law Office, Lincoln
Kathy Zadina, St. Bonaventure Child Care Center Director, Columbus
Jose Zapata, Executive Director, Central Nebraska Community Services, Loup City

Ex-Officio

Public Policy Chair: Sarah Ann Kotchian, JD, Director, EC Policies & Public Services, Building Bright Futures, Omaha

T.E.A.C.H. Early Childhood® NEBRASKA Advisory Committee

- Beth Brewer, Metropolitan Community College, Omaha
- Jackie Hahn, Nebraska Indian Community Colleges, S. Sioux City
- Sue Jensen, Health & Human Services System Licensing, Grand Island
- Crystal Kozak, Southeast Community College, Lincoln
- Diane Lewis, Health & Human Services System, Lincoln
- Paula Thompson, Central Nebraska Community Services, Loup City
- Kelly Vanness, Platte Valley Early Childhood Training Coalition, Columbus
- Roxanne Vipond, Grand Island Public Schools, Grand Island
- Jeanne Webb, Central Community College, Grand Island



www.NebraskaAEYC.org

NEBRASKA AEYC STAFF

Gina DeFreece, Special Projects Coordinator: gdefreece@NebraskaAEYC.org, 402-476-5672
Connie Fishburn, T.E.A.C.H. Assistant: cfishburn@NebraskaAEYC.org, 402-476-5663
Tracy Gordon, Special Projects Coordinator: tgordon@NebraskaAEYC.org, 402-476-5662
Jennifer Harris, Finance Manager: jharris@NebraskaAEYC.org, 402-476-5671
Pat Hoffschneider, Accounting Assistant: phoff44@hotmail.com, 402-476-2092
Cindy Jennett, Special Projects Coordinator: cjennett11@NebraskaAEYC.org, 402-476-5653
Brandee Lengel, T.E.A.C.H. Early Childhood® NEBRASKA Manager: TEACH@NebraskaAEYC.org,
402-476-5668 or 1-877-656-2005
Bridget Paseka, Administrative Assistant: bpaseka@NebraskaAEYC.org
Linda Zinke, Executive Director: lzinke@NebraskaAEYC.org, 402-476-2089
FAX: 402-476-5665

Nebraska AEYC Staff

Pictured left to right:
Connie, Tracy,
Linda, Gina,
Pat, Brandee,
Cindy, Jennifer



Not pictured:
Bridget Paseka

"No problem can stand the assault of sustained thinking."

Voltaire