



CHILDREN... THE HEART OF THE MATTER

© 1988 NeAEYC

Nebraska Association for the Education of Young Children, Inc.

An affiliate of the National Association for the Education of Young Children



SPRING 2007

Newsletter

FROM THE PRESIDENT

Steve Wilson

Just the other day I was visiting with a colleague whom I've known for many years. During that conversation, we talked about our experiences we've had with professional organizations and how these affiliations helped develop who we have become in the world of educating children. It was a great time of reflection on our own experiences and professional development. Somehow, we transitioned into the conversation of relating our own experiences to the experiences of parents and children when they first come to our school. The same key elements of what kept us involved in our organizations are the same key elements that make children and parents want to participate and be actively involved in school.



When we first come into an organization, we look for ways to fit in and connect with others in the organization. We look for the commonalities that we share with all others and being the social creatures we are, look at establishing friendships. We also join because we want to be part of something good and beneficial and be active in developing our interests in professional practices. These same elements exist for parents when they send their children to school. Parents, knowing it is their responsibility to educate their children, send them to school. They mostly pull from their own experiences in school to establish their beginning ideas of school and further those thoughts through the experiences their children have at school. Children, being social creatures, are quick to find commonalities between themselves and the others in their classroom or program and seek the same elements they have found at home. All children look to be nurtured, appreciated, challenged, and have a positive experience in a safe, well managed, program. Parents expect the same thing.

Whether we work and play in a daycare setting, preschool or the elementary classrooms, children and parents seek the same key elements we search for in the organizations we belong. Parents and children look for the commonalities between themselves and others in the program. They seek the comforts of home and a place to belong and be appreciated. It is the first experiences that we all have in the organization that determine if we will continue to belong and be a part of for a long time. These first experiences for children are the most important, just as they are for us when we join and continue to support our organizations!

FROM THE EXECUTIVE DIRECTOR

Linda Zinke



April is the month of the Week of the Young Child. This is a great opportunity for all of us to really think about the importance of early childhood professionals and their impact on the children, families, communities and the state.

*"Nebraska's early care and education industry employs tens of thousands of people, serves about 100,000 children in licensed care, and generates state revenues comparable to that of the state's major industries. This industry not only serves Nebraska's workers today, but prepares children to be successful as students and professionals later in life"**

Here are some ideas to help generate awareness of the importance of high quality early care and education:

- ♥ Invite community members to visit high-quality programs,
- ♥ Publicly recognize those who work with and for young children in your community,
- ♥ Coordinate special programs or classroom activities that include parents, businesses, and other community partners,
- ♥ Work with the local library, literacy organizations, civic clubs, bookstore owners and other members of the education community to plan community-wide celebrations,
- ♥ Promote good early childhood education as a violence prevention strategy,
- ♥ Coordinate with community health partners to organize special programs or classroom activities.

Take time to recognize and thank the early childhood professionals in your community every day, but especially during the Week of the Young Child, April 13-19, 2008.

*Economic Impact of the Nebraska Early Care and Education Industry Report, 2007, available at www.NebraskaAEYC.org

"A hundred years from now, it will not matter what my bank account was, the sort of house I lived in, or the kind of car I drove. But the world may be different because I was important in the life of a child." Forest E. Witcraft

Nebraska Association for the Education of Young Children Mission Statement

The Nebraska Association for the Education of Young Children, Inc. is committed to supporting high quality care and education for young children in the state of Nebraska.

The mission of the Nebraska Association for the Education of Young Children, Inc. is to:

- ♥ promote professional development activities
- ♥ advocate for issues relating to children and families
- ♥ serve as a resource for local affiliates and for other agencies involved in working with and for children and families
- ♥ disseminate information supportive of quality services, education, and care for children and their families
- ♥ provide networking opportunities for early childhood professionals and families throughout the state.

IN THIS ISSUE:

- Page 1** *From the Executive Director, From the President*
Page 2 *Board of Directors, Staff*
Page 3 *Board of Directors, WOYC, Board Bullets*
Page 4 *0-3 Endowment, ERS, Annual Survey Reminder*
Page 5 *Distinguished Service to Children, History, Public Policy*
Page 6 *NeAEYC 2008 Pre-Conference & Conference Information*
Page 7 *NeAEYC 2008 Pre-Conference & Conference Information*
Page 8 *Conference Registration Form*
Page 9 *Volunteer Member Information, T.E.A.C.H.*
Page 10 *Chapter News, Affiliate/Chapter Information*
Page 11 *Membership Info, New Members, Technology, Accreditation*
Back Page *Upcoming Conferences*

The Nebraska Association for the Education of Young Children newsletter is published four times yearly in February, May, August and November. NeAEYC supports developmentally appropriate practices for the care and education of young children. It also promotes inclusiveness, cultural awareness, and gender equity through its publications and conferences.

Deadline for submission of articles:

<u>Issue Date</u>	<u>Submission Deadline</u>	<u>Publication</u>
Spring	January 15	February
Summer	April 15	May
Fall	July 15	August
Winter	October 15	November

Send articles, information, comments, suggestions, affiliate reports, and address changes to:

Pat Hoffschneider, Office Manager
 650 J St, Suite 23, Lincoln, NE 68508
 Phone: 402-476-2092 Fax: 402-476-5665
 e-mail: phoff44@hotmail.com

Nebraska AEYC

Linda Zinke, Executive Director
 650 J Street, Suite 23
 Lincoln, NE 68508
 Ph: 402-476-2089
 Fax: 402-476-5665
 Email – Lzinke@NebraskaAEYC.org
www.NebraskaAEYC.org

BOARD OF DIRECTORS

January 1, 2008 – December 31, 2008

EXECUTIVE COMMITTEE

President

Steve Wilson, Cairo
 Centura Public Schools

President Elect

Dawn Mollenkopf, Kearney
 University of Nebraska at Kearney

Secretary

Pat Enevoldsen, Lincoln
 Southeast Community College

Finance Chair

Linda Sullivan, Lincoln
 Family Service Association of Lincoln

Public Policy Chair

Sarah Ann Lewis, Omaha
 Voices for Children

Members

Kim Chase, Papillion
 Family Child Care Provider

Terrence Coleman, Omaha
 PayPal

Dee Condon, Columbus
 Columbus Public Schools

Don George, Omaha
 First National Bank Child Development Center

Jennifer Haggart, Omaha
 Early Childhood Consortium of the Omaha Area

Kim Madsen, Chadron
 Chadron State College

Melva Pavelka, Kearney
 Mid-Nebraska Community Services

Deb Ross, Hastings
 Child & Family Development Corporation

Sue Ellen Wall, Lincoln
 Wall Law Office

Janeen Ward, Lincoln
 Lincoln Public Schools

José Zapata, Loup City
 Central Nebraska Community Services

Nebraska AEYC Office Staff

Brandee Lengel, T.E.A.C.H. Coordinator
 (402) 476-5658 - TEACH@NebraskaAEYC.org

Pat Hoffschneider, Office Manager
 (402) 476-2092 - phoff44@hotmail.com

Tracy Gordon, Special Projects Coordinator
 (402) 476-5662 - TGordon@NebraskaAEYC.org

Connie Fishburn, Administrative Assistant
 (402) 476-5663 - c-fishburn@hotmail.com

Nebraska AEYC Board of Directors

OFFICERS OF THE NEBRASKA AEYC BOARD OF DIRECTORS

NeAEYC has a new slate of officers for the 2008 year:



- Steve Wilson remains the President.
- President Elect is Dawn Mollenkopf, an Assistant Professor in EC at the University of Nebraska at Kearney. She is involved in several EC teams in Nebraska including the Core Competencies Team and EC Policy Study Team.
- Secretary is Pat Enevoldson of Southeast Community College. Pat is also serving as the President of the Lincoln AEYC Chapter. Pat has been involved in early childhood for 36 years.
- Finance Chair remains Linda Sullivan, Finance Manager of Family Service of Lincoln.
- Public Policy Chair remains Sarah Ann Lewis of Voices for Children.

Standing Committees and the board members on the committees are:

- Finance/Audit Committee: Linda Sullivan, Jose Zapata, Kim Madsen
- Human Resources Committee: Don George, Sue Ellen Wall, Terrence Coleman
- Advocacy/Public Awareness Committee: Sarah Ann Lewis, Kim Chase, Deb Ross, Janeen Ward
- Week of the Young Child/Chapter Activities Committee: Jen Haggart, Dee Condon, Melva Pavelka, Pat Enevoldson

The President and President Elect serve on all committees. Ad Hoc committees will be appointed as needed.

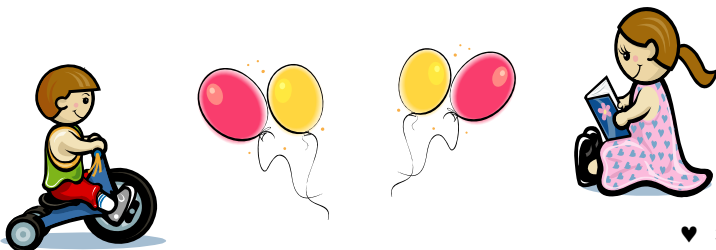
WEEK OF THE YOUNG CHILD MINI-GRANT WINNERS

This is the second year NeAEYC has provided grants for chapters for Week of the Young Child activities. We received excellent applications and decided to fund two more than we had originally planned to fund.

The following chapters will be receiving \$250, WOYC kites and WOYC brochures to support their activities:

- Omaha AEYC Affiliate Chapter - request for funds to support their week long activities
- Lincoln AEYC Affiliate Chapter - request for funds to support their annual Early Childhood Celebration
- Metropolitan Community College Student Chapter - request for funds to support activities on campus during the week
- Southeast Community College Student Chapter - request for funds to support their booth and activities at the Early Childhood Celebration celebration
- Columbus Chapter of NeAEYC - request for funds to support their WOYC activities in partnership with Kindergarten Registration Day
- Kearney Chapter of NeAEYC—request for funds to support WOYC activities at the Hilltop Mall

Other organizations are also providing support for Week of the Young Child activities, including some of the Regional Training Projects.

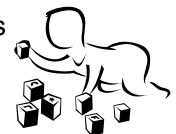


WEEK OF THE YOUNG CHILD APRIL 13-19, 2008

The Week of the Young child, sponsored by the National Association for the Education of Young Children (NAEYC) is an opportunity for early childhood programs, including child care and Head Start programs, preschools and elementary schools, to hold activities to bring awareness of the needs of young children. Across the country, young children and their families depend on quality early care and education, which helps children get a great start, and brings lasting benefits to our society as a whole.

Week of the Young Child is a time to recognize the people, programs, and policies that are helping to build a better future for all children.

The Nebraska AEYC salutes Nebraska's early childhood professionals.



BOARD BULLETS

Training for the NeAEYC Board of Directors was held prior to the January board meeting. The training was facilitated by Kelly Ptacek. Kelly reviewed the different types of boards and focused on the responsibilities of the NeAEYC board.

Following the board training, the committees met and developed plans and ideas for the upcoming year.

0-3 Endowment

In 2006, LB 1256 passed by the Nebraska Legislature, established the Early Childhood Education Endowment Grant Program to serve children birth to age three. The Endowment is a public-private partnership funded with \$40 million from the state and an additional \$20 million from the private sector to be raised within 5 years. The EARNINGS generated from the public-private dollars will be used primarily for grants to school districts to provide programs and services for infants and toddlers who are at risk of school failure.

The public-private Endowment is a permanent source of funding that will be available for quality early childhood programs and services.

The Endowment Fund model is predicated on the power of partnerships. The Endowment Grants will be provided to programs that incorporate meaningful partnerships at the local level between, at a minimum, the local school district and community-based providers of services for infants and toddlers. Schools interested in this funding opportunity are required to partner with programs that exist within the community, including but not limited to, Early Head Start/ Head Start and early childhood care and education programs.

Targeted population:

- ♥ Children (0-3) whose family income would qualify them for participation in the federal free or reduced lunch program;
- ♥ Children (0-3) who were born prematurely or at low birth weight as verified by a physician;
- ♥ Children (0-3) who reside in a home where a language other than spoken English is used as the primary means of communication;
- ♥ Children (0-3) whose parents are younger than 18 or who have not completed high school.

It is expected that applicants will build these 10 best practices into their Endowment application:

1. Whole child approach
2. Inclusion of parents/other family members
3. Staff knowledge of very young children
4. Staff/child or family ratios
5. Staff supervision and training
6. Periodic ongoing assessments
7. Continuity of care
8. Transition planning
9. Multidisciplinary coordination
10. Intensity of services

More information is available at:
www.earlychildhoodendowment.org



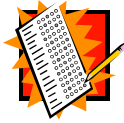
"A child's life is like a piece of paper on which every person leaves a mark."
Chinese Proverb

Spring - 2008

Annual Survey

This year, we are going to try to gather the information from the annual survey in an electronic manner.

The survey is available on the website:
www.NebraskaAEYC.org, on the **About Us** page.



It is in a "fillable" pdf format. Please complete by **April 23, 2008** and attach it to an email to Pat Hoffschneider at phoff44@hotmail.com or print it and fax to (402) 476-5665

We are hoping this format will be more convenient for all of you, and will generate data that will be helpful for Nebraska AEYC.

ENVIRONMENT RATING SCALES

The Environment Ratings Scales (ERS) were developed at the Frank Porter Graham Institute in North Carolina. There are four types of Environment Ratings Scales:

- ♥ Infant-Toddler Environment Ratings Scale (ITERS)
- ♥ Early Childhood Environment Ratings Scale (ECERS)
- ♥ Family Child Care Environment Ratings Scale (FCCERS)
- ♥ School Age Care Environment Ratings Scale (SACERS)

Each one of the scales has items to evaluate Physical Environment, Basic Care, Curriculum, Interaction, Schedule and Program Structure, and Parent and Staff Education. The scales are suitable for use in evaluating inclusive and culturally diverse programs, and have proven reliability and validity. The ERS process quality is assessed primarily through observation and has been found to be more predictive of child outcomes than other indicators.

The scales define environment in a broad sense and guide the observer to assess:

- ♥ The arrangement of space both indoors and outdoors,
- ♥ The materials and activities offered to the children,
- ♥ The supervision and interactions (including language) that occur in the classroom,
- ♥ The schedule of the day, including routines and activities,
- ♥ The support offered to parents and staff

In Nebraska, a variety of entities are using the Environment Ratings Scale process, including the Nebraska AEYC QEPP Project, the NeAEYC T.E.A.C.H. Early Childhood Project, Nebraska Department of Education Pre-K programs, The Infant-Toddler Initiative, and several other projects and individual centers.

Training is offered across the state at various times throughout the year. We are constantly in need of additional reliable observers in ITERS, ECERS, and FCCERS. Reliable observers are paid for the observation time, travel time, and travel. If you are interested in training for this process, contact our office (402) 476-2092.

Information from: <http://www.fpg.unc.edu/~ecers/>

DISTINGUISHED SERVICE TO CHILDREN AWARD

It is again time to consider applications for the Distinguished Service to Young Children Award.

This award was developed in 1983 to recognize a member who has contributed outstanding service to the organization, its program of work, its development and its membership, or a Nebraskan who has done exemplary work to promote the rights, services, status and programs for/of children.

If you have a nominee, please send the name of the nominee and the reasons why you think they should be recognized by the office.

Nominee Information

Name: _____

Current Address: _____

Current Position: _____

Nominations require submission of supporting narrative, providing information on the individual's background and services rendered to or in behalf of young children. Attach support information to this nomination sheet.

Nomination Submitted by:

Send nominations to:

Pat Hoffschneider, Office Manager

650 J Street, Ste. 23

Lincoln, NE 68508

phoff44@hotmail.com or Fax: (402) 476-5665

History of NeAEYC

1998-1999 - NeAEYC Officers for this year were:

- ♥ Pam Dolberg, President - Lincoln
- ♥ Diane Ehrhardt, President-Elect, Wayne
- ♥ Ruth Staley, Secretary - Kearney
- ♥ Marcia Corr, Treasurer - Eagle

September, 1999 - Nebraska AEYC Symposium was held in Kearney, NE

November, 1999 - National AEYC Conference was held in New Orleans, Louisiana

Fall of 1999: Diane Ehrhardt, Wayne, NE will be assuming the role of President.

PUBLIC POLICY

Education of Parents as the Means to the Education of Children by Sarah Ann Lewis

Currently, the Health and Human Services Committee of the Nebraska Legislature is holding LB 877. This bill, introduced by Senator Wightman, would open the door for parents who are receiving welfare to acquire postsecondary education to lead them to higher paying jobs and ease the transition from government assistance to work. If this bill is made law, it could also lead to higher quality education for children.

Studies have shown that investments in postsecondary education permanently move women and their families from welfare to jobs that lead women into progressively higher paying positions with benefits. Research shows that children of mothers with high levels of education stay in school longer than children of mothers with low levels of education. A mother's education has also served as the best predictor of a child's health and nutrition. If we focus energy to the education of parents, we can greatly impact the quality of education for children.

In Nebraska, of individuals age 25 and over living in poverty, 62.5% have no college education. By adding some college or an associate degree to the equation, only 26.4% of those Nebraskans are living below the poverty level. As expected, the poverty rate decreases with additional education such as bachelors, graduate, or professional degrees. With the addition of some college or an associate degree, the rate of poverty is decreased by 36%.

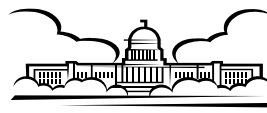
Voices for Children in Nebraska reports that 88% of low-income children in Nebraska have at least one working parent. Yet, in spite of this strong work ethic and what can be considered nearly full employment in our state, a 50% increase of children living in poverty has occurred between the years 2000-2005. LB 877 could change these statistics.

LB 877 is Nebraska's opportunity to introduce policy that supports higher education for parents and therefore children. It is one thing to bring better paying jobs to Nebraska, but it is another to have a workforce trained to take them. Easing the transition from welfare to work will help families earn an education to allow for the alarming increase in child poverty to cease and simultaneously prepare children for brighter futures.

ⁱCenter for Women Policy Studies. (2002).

From Poverty to Self-sufficiency: The role of postsecondary education in welfare reform. Washington, DC.

ⁱⁱU.S. Census Bureau, 2007 American Community Survey.



Nebraska AEOYC 2008 Pre-conference

July 24-25

In our efforts to provide early childhood professionals with exciting and innovative presenters and information, we are hosting two distinct and separate **pre-conferences** in two different locations on Thursday, July 24, 2008.

The Kindergarten Pre-conference will be held in Lincoln, NE at the Embassy Suites, and the Nature Education Pre-conference will be held in Nebraska City, NE at the Lied Lodge. While the logistics may be challenging, we are proud to be offering both exceptionally high quality events at a very reasonable cost. To assist with travel logistics, we will be providing limited transportation between Lincoln and Nebraska City.

KINDERGARTEN PRE-CONFERENCE: THURSDAY, JULY 24, 2008

EMBASSY SUITES, LINCOLN, NE

Dr. Pam Schiller, Cypress, Texas



Pam Schiller is an early childhood curriculum specialist. She has worked as a child care administrator & has also taught in the public schools as a kindergarten teacher. She served as head of the Early Childhood Department at the University of Houston, where she also directed the Lab School. Dr. Schiller shares her extensive knowledge in workshops, radio, & television interviews, & as a popular keynote speaker & author. She has written 5 early childhood curriculums, 11 children's books, more than 30 teacher & parent resource books, and a number of projects, such as activity books, DVDs & CDs.

A Call to Action: Reconnecting the World's Children to Nature

Harriet Egertson and Susan Anderson.

This special luncheon presentation will call upon us all to rediscover the benefits of paying attention to nature and to take action to strengthen children's connections to nature.

Lunch is included as a part of the pre-conference registration cost.



Harriet



Susan

LEARNING WITH NATURE PRE-CONFERENCE: THURSDAY, JULY 24, 2008

LIED LODGE, NEBRASKA CITY, NE

Leadership Team of the International Nature Action Collaborative for Children

Each of the following sessions will be 1 and 1/2 hours in length and will be repeated three times so each participant may attend each session. Presenters will be experts in fields such as early childhood and elementary education, environmental education and landscape design.

Session One: Using Nature Connections to Support Learning Across the Curriculum

Session Two: Family Involvement Activities for Helping Children Connect with Nature

Session Three: Creating Outdoor Spaces that Support Learning with Nature

Members of the Nature Action Collaborative are from Australia, Columbia, Denmark, Haiti, India, Nepal, New Zealand, Scotland, Swaziland, Uganda, and the United States.

Lunch is included as a part of the pre-conference registration cost.

Registration is limited for this session, so register early!



Embassy Suites, Lincoln: 402-474-1111
www.embassysuiteslincoln.com
Conference Code: YOU

Hotel Information

Lied Lodge, Nebraska City: 800-546-5433
www.liedlodge.org
Conference Code: Working Forum on Nature



VISIT THE WEBSITE AT www.NebraskaAEOYC.org

conferences & Conference

26, 2008

The Conference is scheduled for Friday and Saturday, July 25th and 26th, in Lincoln at the Embassy Suites. It will include keynote presentations, featured speakers, exhibits, special activities, and tours.

KEYNOTE PRESENTERS: Friday, July 25, 2008 ROB AND TONI CHRISTIE, WELLINGTON, NEW ZEALAND



Toni and Robin Christie founded Childspace Early Learning Centers in Wellington, New Zealand and subsequently, the Childspace Early Childhood Institute. Toni and Robin believe that early childhood is the most significant stage of every person's development. They are driven to provide practical, relevant, natural and aesthetic resources and environments for all who play and work with very young children.

Toni and Robin designed and rebuilt an environment in Te Araroa, East Cape, North Island, Aotearoa/New Zealand. The story of their project will inspire you to think about the materials in your immediate environment. Utilizing the driftwood, stones and local natural products, Toni and Robin created an aesthetic and challenging early childhood environment inspired by nature, local culture and community context. This is a story of design, construction, budget, isolation, culture, teamwork, nature and community as told by a husband and wife team who are passionate about their roles as educators and designers.

Toni and Robin will also be presenting a featured speaker session later on Friday.

KEYNOTE PRESENTER: SATURDAY, JULY 26, 2008 CLAIRE WARDEN, PERTHSHIRE SCOTLAND

Claire Warden, B.ED Hons, Dip Drama, is an educational consultant who has developed her approach to experiential learning through a variety of experiences. Her experiences have taken her on a pathway that includes working in a variety of types of centers, advisory work, and ultimately to lecturing in further education.

As a lecturer in Primary Education at Strathclyde University, the development of training strategies and course creation have been applied to the dynamic and creative work currently undertaken by her company called Mindstretchers. Mindstretchers was set up as a training consultancy in 1996. It has now grown to develop many aspects, such as a project approach called, "The Living Classroom:", which explores sensorial and experiential learning in challenging outdoor spaces across Scotland.



Claire Warden is an author of many books and materials relating to early years methodology. These include *The Potential of a Puddle*, *Talking and Thinking Floorbooks*, *The Right to be Me*, and *Nurture through Nature*.

Claire will also be presenting a featured speaker session on Friday afternoon.
Dr. Warden is one of a leadership group of consultants who make up the World Nature Collaborative.

BREAKOUT PRESENTER TOPICS

Both Friday and Saturday will have "tracks" focusing on Kindergarten and The Impact of Nature, in addition to a variety of early childhood topics.

Some titles include:

Super Size Me, Director's Daze, We Dig Dirt!, Signing with Children, Challenging Behaviors, Working with Those Angry Children, Make Science Fun & Exciting, Children with Autism, Understanding the English Language Learner, Infant Environments, Literary Work Stations, Books for Young Children, Free Play Does Oodles for your Noodle, Where's the Remote? Media Images & Young Children

Presenters are from:

USA: Alabama, California, Colorado, Florida, Illinois, Iowa, Kansas, Nebraska, South Dakota, Texas, Virginia

International: Hong Kong, Taiwan, Scotland, New Zealand

NEBRASKA AEYC REGISTRATION FORM

Pre-Conference - Thursday, July 24, 2008 – Lincoln OR Nebraska City, NE
Conference - Friday, & Saturday, July 24-26, 2008 – Embassy Suites, Lincoln, Nebraska

“EARLY BIRD RATES” Register by June 19, 2008 CHECK COST CATEGORY	AEYC Member	Non-Member	Student Member	Student Non-member
Pre-conference: Thursday, July 24 – Lunch included	\$60	\$90	\$50	\$80
Conference: Friday & Saturday, July 25 & 26	\$100	\$140	\$85	\$125
Conference: Friday, July 25 ONLY	\$60	\$85	\$50	\$75
Conference: Saturday, July 26, ONLY	\$60	\$85	\$50	\$75

“REGULAR RATES” June 20, 2008 - July 26, 2008 CHECK COST CATEGORY	AEYC Member	Non-Member	Student Member	Student Non-member
Pre-conference: Thursday, July 24 – Lunch included	\$85	\$110	\$75	\$100
Conference: Friday & Saturday, July 25 & 26	\$140	\$180	\$125	\$165
Conference: Friday, July 25 ONLY	\$85	\$110	\$75	\$100
Conference: Saturday, July 26, ONLY	\$85	\$110	\$75	\$100

PRE-CONFERENCE SESSIONS, Thursday, July 24, 2008 – SELECT ONLY ONE

PRE-CONFERENCE LOCATIONS	TOPICS
Lied Lodge, Nebraska City	Learning with Nature (SPACE IS LIMITED FOR THIS SESSION)
Embassy Suites, Lincoln	Kindergarten

TOURS – MAKE SELECTIONS – CHECK ALL THAT APPLY

#1 Outdoor classrooms – Tour with Lunch Friday, 11:15 to 2:15 pm - \$20	#2 Outdoor classrooms – Tour with Lunch Saturday, 11:15 – 2:15 pm - \$20
-----------------------------------------------------------------------------------	------------------------------------------------------------------------------------

(Please Print Clearly or Type)

 Last Name First/Middle Name

 Organization

 Address - Street, Route, P O Box, Apartment #

 City State Zip Code

 Daytime Telephone Email Address

NAEYC Membership ID# _____ Students - College/University attending: _____

REGISTRATION COSTS	
Pre-conference cost	
Conference cost	
Tour cost	
TOTAL DUE	

Make checks payable to **Nebraska AEYC**
 Purchase orders accepted - **payment due two weeks before conference.**
 To join, go to NAEYC.org or NebraskaAEYC.org
 Conference information available at:
www.NebraskaAeyc.org

If paying with a Credit Card, go to the “Conference Registration” page, and click on the Credit Card link then:
 Check here _____ Date Paid _____
 Type information into document, save it to your computer, and email it as an attachment to:
phoff44@hotmail.com or fax to: (402) 476-5665

Mail to: Nebraska AEYC, Inc. 650 J. Street, Suite 23, Lincoln, NE 68508
 402-476-5663/402-476-2092 NeAEYC@NebraskaAEYC.org – fax 402-476-5665

Purchase Order # _____
Check # _____
Money Order # _____

Complete ONE Form for EACH registrant. Copy extra forms as needed.
Pre-conference lunch has been funded by donations.

Office Use Only
 Date Recvd _____ Entered

Prospective Volunteer Member Information

We are in need of volunteers for the 2008 Nebraska AEYC Pre-Conference and Conference, July 24-26. We will also be needing volunteers on Wednesday, July 23, 2008 for some preparation work. As a member, you are very important to us and this may be a way for you to become more involved with the organization.



You must be a paid, registered participant to be a volunteer. While NeAEYC cannot offer compensation in the form of a reduced registration rate, you will receive recognition and a small token of appreciation.

If you are planning on attending this conference, and would like to be a NeAEYC Volunteer, please fill out the following information and either mail, email, or fax it to Pat Hoffschneider - 650 J Street, Ste. 23, Lincoln, NE 68508 - phoff44@hotmail.com or Fax (402) 476-5665.

NAME: _____

STREET ADDRESS: _____

CITY: _____ STATE: _____ ZIP: _____

EMAIL: _____ CELL: _____

DAY PH: _____ EVENING PH: _____

I am available to volunteer on the following days: (please check all that apply - scheduling and assignments will be sent out as conference time gets closer)

<input type="checkbox"/>	Wednesday, AM	<input type="checkbox"/>	Wednesday, PM
<input type="checkbox"/>	Thurs AM-Neb City	<input type="checkbox"/>	Thurs PM-Neb City
<input type="checkbox"/>	Thurs AM-Lincoln	<input type="checkbox"/>	Thurs PM - Lincoln
<input type="checkbox"/>	Friday - AM	<input type="checkbox"/>	Friday - PM
<input type="checkbox"/>	Saturday - AM	<input type="checkbox"/>	Saturday - PM

T.E.A.C.H. Early Childhood[®] NEBRASKA

2008 SURVEY HIGHLIGHTS

Each year T.E.A.C.H. scholarship recipients and their sponsoring programs are surveyed to assess program satisfaction and to help us plan for changes in the program.

- ♥ 100% of both recipients and sponsoring programs would recommend T.E.A.C.H. to others.
- ♥ 100% of students reported that they have used what they have learned in their early childhood classes in their programs.
- ♥ 100% of sponsoring programs agree that the recipient has improved the quality of her/his teaching techniques and practices.
- ♥ 62% of students would not have taken classes last year if they didn't have a T.E.A.C.H. scholarship. 72% of those, indicated that they could not have afforded the tuition/books.

Drawing Winners

Students

Bonnie Christiansen- Thurston County
Heather Fossler- Gage County
Trish Gorecki- Greeley County

Sponsoring Programs

Paula Thompson- CNCS Loup City
Valerie Smith- YMCA Scottsbluff

Quotes From Sponsoring Programs

- ♥ "I think one of the great things about T.E.A.C.H. is it appeals to candidates that are already great with kids & motivates them to do even better! It takes great child care providers and makes them excellent!"
- ♥ "The specific recipient has the above quality intrinsically, and I believe the education she received helped to bring these out."

Quotes From Scholarship Recipients

- ♥ "I would not be the teacher I am today had it not been for TEACH. I only get better the more I learn."
- ♥ "It made me feel confident in my skills and excited about Early Childhood Education."
- ♥ "It's a dream come true! I am so thankful to have this scholarship and with it I am able to provide a great place for the children in my care to grow in by using the knowledge I'm learning and applying it to my curriculum."

**"Coming together is a beginning.
Keeping together is progress.
Working together is success."
Henry Ford**

CHAPTER RETREAT NEWS

CHAPTER RETREAT—FEBRUARY 8, 2008

A retreat for chapter leaders was hosted by the Nebraska AEYC on February 8, 2008. The day began with information about the growth of the Nebraska AEYC over the past six years. NeAEYC has developed a new process to provide concrete support to each of the chapters, including the student chapters. Each chapter will have points, and be able to access resources such as professional books, children's books, promotional items (pencils, post-it notes, portfolios, pens, etc), as well as staff support for potential web pages or event flyers.

Gwen Simmons, Affiliate Chapter Liaison from NAEYC attended the event and helped facilitate the planning process. She provided information regarding upcoming changes from the national office, and training on collaboration. A working lunch was spent discussing past and future plans for the Week of the Young Child.

Many attending expressed the wish to make this a bi-annual event. Plans are in process for the next chapter retreat to be scheduled for early August.

Evaluations from the retreat were very positive! The following are some of the quotes from the evaluations:

THE BEST PART OF THE DAY WAS.....

- "Thank you so much! Leadership discussion, ideas to take back to our group".
- "Getting new ideas - feeling we are not alone. Knowing where and how to go for resources."
- "Having Gwen here! Networking with other child care professionals."



AFFILIATE/CHAPTER INFORMATION

Lincoln AEYC

16th Annual Early Childhood Celebration
Saturday, April 19, 2008
9 am to 1 pm
Ag Hall, State Fair Park

Early Childhood Recognition Ceremony 11:00 am to noon.

Over 30 booths with hands-on activities for children ages birth through eight years. Stage performances through the day. Celebration t-shirts available for sale.

FREE ADMISSION!

Kearney Area Chapter of NeAEYC

During the past several months we have been sponsoring the Early Learning Guidelines Training. 36 people (members & nonmembers) are participating in the 14 sessions that are being held twice a month. We are excited to be wrapping up this very successful training on the evening of Monday, April 21st. Our hats go off to Marcia Fritz and Mindy Young for presenting this training, making it very practical and fun. It has been very well received.

The KAC of NeAEYC will have a Spring Planning Meeting on Monday, March 31st at the Kearney YMCA from 7:00 – 8:00 pm. The purpose of the meeting will be the election of officers for the next school year, and to plan the calendar for next year. All members are encouraged to attend, and visitors are welcome.

Week of the Young Child will be celebrated in Kearney at the Hilltop Mall with a Celebration from 11:00 am – 1:00pm. Kearney Area Chapter of NeAEYC, Kearney Headstart, Kearney Directors Group, and the Kearney Child Care Association are partnering together to provide fun activities for children to do with their parents/families. We are thrilled to have been selected to receive one of the NeAEYC Mini-grants to help up provide this Celebration to Kearney area families.

Omaha AEYC

State Senator Meet and Greet was held February 5, 2008. We provided breakfast, a brief presentation on early childhood as a profession and the benefits of play.

Networking Night was held February 19, 2008. Tours of Union Pacific CDC were provided followed by networking, training on teamwork and door prizes. Almost 50 people were in attendance and we gained 5 new members!

Almost 160 people attended the Kaleidoscope Conference featuring Michael Brandwein on March 1, 2008!

Saturday, April 12, 2008 - WOTYC Kick Off Event
1:00 p.m. to 3:00 p.m. - Zorinsky Park, 156th & F

Tuesday, April 22, 2008 - Professional Development Night
Every Child Ready to Read
6:30 to 8:30 p.m. - ESU #3, 6949 S 110th St
Tour - ECTC Media Center 6:00 p.m.

Thursday, May 29 - Networking Night - 6:30 to 9:00 pm

Columbus Chapter of NeAEYC

Board members and volunteers assembled over 400 packets of information for parents to be distributed at area Kindergarten Registration Days coming up in April. One hundred of the packets were in Spanish, the rest in English. Information came from NAEYC, the National Institute for Literacy, the Nebraska Department of Education, the U.S. Department of Education, and Positive Promotions.

Board members also reviewed information from the Affiliate/Chapter Retreat held in February, and decided to ask for 3 memberships from NeAEYC Resource Options. The 2007 Chapter Report was also completed and mailed in. Members will be looking into providing a support group for Directors and/or for Preschool Teachers, as those have been identified as needs in the Columbus Area.



CHILDREN . . . THE HEART OF THE MATTER
Nebraska Association for the Education of Young Children, Inc.
An affiliate of the National Association for the Education of Young Children

ATTENTION MEMBERS!!

Help us to increase our Nebraska AEYC membership. For each "NEW" member you recruit, (up to 3 per year) NeAEYC will send you a **coupon for \$10.00** off of your next renewal.

All you need to do is have the "NEW" member that you recruit fill out the application, write on the application who they were "REFERRED BY", enclose a check and mail to:

Nebraska AEYC, 650 J St., Ste. 23, Lincoln, NE 68508

When you receive your renewal reminder, just attach your coupon to your membership renewal form, your renewal fee minus \$10.00, and mail it to our office. NeAEYC will attach a check, and mail it to the National Office!



Find the membership numbers in this newsletter. (There are "3") If one of them is your number, call (402) 476-2092 or email: phoff44@hotmail.com
Tell us where you found it in the newsletter, and we will send you a coupon for \$10.00 off of your next renewal!

These are the **three** lucky membership numbers in this newsletter. Is one of them yours??



#964648



#842169

#961995

TECHNOLOGY UPDATE



We will soon be starting the second year of our "NEW AND IMPROVED" website!

www.NebraskaAEYC.org

We are averaging almost 3000 hits per month!

Site pages visited frequently the past few months were:
 Calendar, T.E.A.C.H. Early Childhood, and NeAEYC 2008 Conference

Conference Registration is now joining the "most visited" site!

The website accepts most credit cards or bank cards for donations and conference registration.

If anyone discovers a link that is not working, please email phoff44@hotmail.com



WELCOME!!

We welcome the following new members for 4th Quarter 2007

Heidi Armstrong
 Nancy Brosamle
 Linda Burke
 Michelle Canning
 Michelle Chapman
 Susan Cloyed
 Jenny Fleming
 Maria Gaebler
 Laura Gassen
 Emily Geopforth
 Dalhia Ingram
 Terra Johnson
 Brittany Kruse
 Rebecca Laws
 Mary Leidy

Bobbie Magnuson
 Amanda Marsh
 Phyllis Mayhew
 Fratma McCraney
 Amanda Reinhart
 Kimer Renk
 Deb Ross
 Susan Snow
 Jill Snyder
 Barbara Sunderman
 Stacy Vitosh
 Kimberly Wesson
 Maria Wesson
 Bev Wildauer
 Emily Williams
 Carrie Witte

WHY SHOULD I BE A MEMBER OF NeAEYC?

Here are only a few of the reasons:

- ♥ NeAEYC works to support people working with children Birth - Grade 3.
- ♥ Receive NeAEYC Quarterly Newsletter.
- ♥ Improve your teaching and learning.
- ♥ Voting rights in NAEYC elections to help shape the future of the early childhood profession.
- ♥ Promote public support and policies for young children.
- ♥ Receive six issues of *Young Children* journal.
- ♥ Comprehensive members receive six additional publications as they are released through the year.
- ♥ CONFERENCE DISCOUNTS!

Nebraska AEYC's Pre-Conference and Conference

July 24-26, 2008!

Don't miss the opportunity to register at a reduced rate as part of your **MEMBERSHIP** benefits!!!

ACCREDITATION

We are trying to gather information about programs that are in the process of working toward NAEYC Accreditation. If you are a part of this group, or know of any centers that are working toward Accreditation, please either email Tracy Gordon at



tgordon@NebraskaAEYC.org or call (402) 476-5662



Nebraska Association for the
Education of Young Children
650 J Street, Suite 23
Lincoln, NE 68508

NONPROFIT ORG
U.S. POSTAGE
PAID
LINCOLN, NE
PERMIT NO 350

Visit our website:
www.NebraskaAEYC.org

UPCOMING CONFERENCES

- ♥ **March 15, 2008** - Understanding Disabilities in Young Children - Seward, NE - For information contact Marian - (402) 761-3341 - meicher@esu6.org
- ♥ **March 26-28, 2008** - ERS Training - Scottsbluff, NE - For information contact Penny Gildea - (402) 557-6895 - penny.gildea@nde.ne.gov
- ♥ **March 29, 2008** - A Window of Opportunity - Child Care Conference - Lincoln, NE - For information contact Lorene Bartos - (402) 441-7180
- ♥ **April 4 & 5, 2008** - Infant Toddler Symposium - Omaha, NE - For information contact Jen Haggart - (402) 597-4991 - jhaggart@esu3.org
- ♥ **April 5, 2008** - Caring for Children Conference - McCook, NE - For information contact (800) 658-4348, ext 8122
- ♥ **April 5, 2008** - Peru State Early Childhood Conference - For information contact Holly - (402) 274-4954 - hhawley@esu4.org
- ♥ **April 12, 2008** - Learning With Nature and The Wonders of Nature - Arbor Day Farm - Nebraska City, NE - For information contact JoAnn Rall - (402) 476-8304 - Joannr@dimensionsfoundation.org
- ♥ **April 13-19, 2008** - Week of the Young Child - For more information visit the National Website - www.NAEYC.org
- ♥ **April 19, 2008** - Learning with Nature and The Wonders of Nature - Ponca State Park - Ponca, NE - For information contact Susan Strahm - (402) 287-2061 - www.esu1.org
- ♥ **April 19, 2008** - 16th Annual Early Childhood Celebration - Lincoln, NE - For information contact Josette - (402) 471-4515 - jbright@lincoln-action.org
- ♥ **April 25-26, 2008** - Nebraska Family Child Care Conference - Kearney, NE - For information contact Patti Longcrier - (402) 592-1191 - plongcrier@cox.net
- ♥ **May 10, 2008** - Choosing Effective Indoor and Outdoor Materials and Using Your Outdoor Classroom - Arbor Day farm - Nebraska City, NE - For information contact JoAnn Rall - (402) 476-8304 - Joannr@dimensionsfoundation.org
- ♥ **June 8-11, 2008** - NAEYC's National Institute for Early Childhood Professional Development - New Orleans, LA - For more information visit the National Website - www.NAEYC.org
- ♥ **June 18, 2008** - Concordia University ECC - Seward, NE - For information contact Judy Ripke - (800) 535-5494
- ♥ **July 16-18, 2008** - ERS Training - For information contact Linda Meyers - (402) 471-2980 - linda.meyers@nde.gov or Penny Gildea - (402) 597-4824 - penny.gildea@nde.ne.gov
- ♥ **July 21-23, 2008** - 2008 Working Forum on Nature Education for Young Children - For information www.worldforumfoundation.org

July 24-26, 2008 - Nebraska AEYC 2008 Pre-Conference and Conference
Information and Registration Online at www.NebraskaAEYC.org