



Golden Hills Elementary

"Making a Difference One Student at a Time"

2912 Coffey Avenue, Bellevue, NE 68123
PH: 402-898-0459

Program Overview:

Ages served: Pre-K—6th

Number of children enrolled: 282

27% minority students

Serve low income children: 39% eligible for free/reduced lunch

Golden Hills Elementary School, located in Bellevue, Nebraska, is part of the Papillion-LaVista Public Schools district. It is among the few public schools in Nebraska to receive a distinguished Great Schools Ratings of 9 out of 10.

Golden Hills Elementary School opened its doors for the first time January of 1976. Immediately the school filled in with so many students that portable classrooms had to be brought in. At one time, the school held over 500 students within its doors. Because of the school size, class sizes of 30-35 were not unheard of. Kids were allowed to go home for lunch.

The original floor plan at Golden Hills had NO walls, only a conference area was enclosed. Gradually walls were built; however, they still have no doors and do not go all the way to the ceiling.

One thing that hasn't changed at Golden is the staff and atmosphere of the building. Because of the openness of the building the entire staff stays close and are like family.

INFORMATION DEVELOPED BY NEBRASKA AEYC
www.NebraskaAEYC.org

DIRT DIGGING

- RAISED BEDS
- MULTIPLE HEIGHTS
- ACCESSIBLE
- WOOD FIBER FLOOR

MESSY MATERIALS

- 12"-18" DEEP MULCH
- 4'-6' LONG LOGS @ PERIM.
- LOGS OF INTEREST
- TREE COOKIES / LOG CHUNKS

MUSIC / MOVEMENT

- STAGE - ACCESSIBLE @ BACK STAGE
- MARIMBA / AKOMBIKA
- STORAGE
- WOOD FIBER FLOOR

BUILDING

- TREE COOKIE FLOOR
- DISCOVERY TABLE
- STORAGE

WATER

- HAND PUMP
- RECIRCULATING
- WOOD FIBER FLOOR
- STORAGE

ENTRY

- ARBOR
- GATE
- PIZZA BOX / CONTEXTUAL PAVER FLOOR

GATHERING

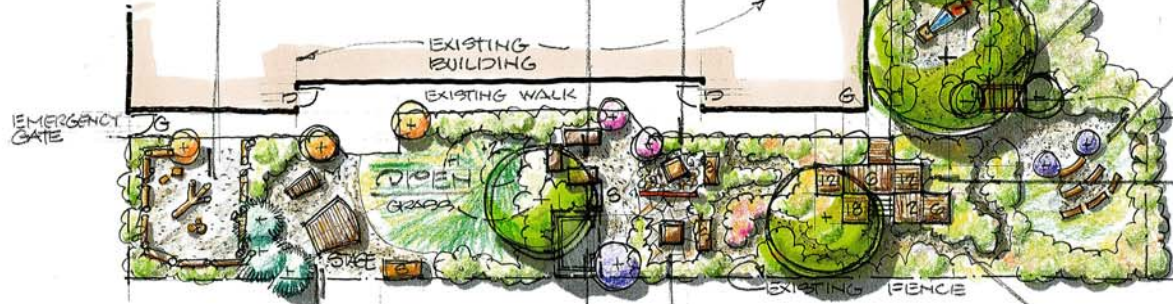
- SEATING ON SLOPE
- ACCESSIBLE @ TOP
- STORAGE

CLIMBING / CRAWLING

- 5' EQ PLATFORMS
- EXTEND VERT. POSTS
- ADD HORIZ. RAILS
- ACCESSIBLE
- FABRIC

PATHS THROUGH PLANTINGS

- VARIED COLOR, BLOOM TIME, SIZE
- TEXTURE
- INSECT / BIRD ATTRACTORS
- ACCESSIBLE + VARIED WIDTH

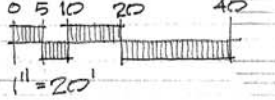


SAND

- RAISED BEDS OR KIWI HUT
- ACCESSIBLE

NATURE ART

- LOCAL FLAGGING FLOOR
- NATURE ART TABLE
- STORAGE
- ART PANEL



NATURE EXPLORE CLASSROOM
CONCEPT PLAN

GOLDEN HILLS 10.29.08 JH

INFORMATION DEVELOPED BY NEBRASKA AEYC
www.NebraskaAEYC.org