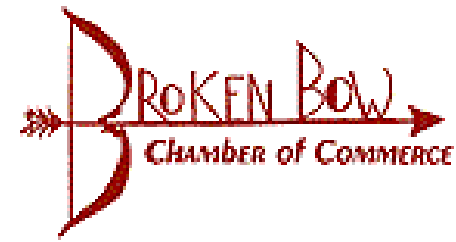


CNCS Early Childhood Program—Broken Bow

924 East Southeast, PO Box 276
Broken Bow, NE 68822
Program Coordinator: Paula Thompson
308-745-0780
Email: pthompson@cennecs.org
Initial Site Visit: April 22 & 23, 2007
Approximate square footage: 13,500

PILOT SITE OVERVIEW



Program Overview:

Central Nebraska Community Services Early Childhood Programs provide for children's basic needs through safe, healthy, consistent, and nurturing environments in order to develop and learn at optimal levels. Families recognize strengths, set goals, develop a support system, and have the well being and knowledge to be the primary educators and nurturers for their children. Communities are aware of the importance of investing in early childhood. CNCS provides full-day, full-year center-based services to 3-5 year old children in Columbus. The program will benefit families who work full-time or attend school. The full-day full-year program will provide services from 7:30a.m. - 5:00p.m., Monday - Thursday, year round for eligible families.

Ages served: 0-30

Number of children enrolled: Infants Toddlers, Preschool

Serve children with Special Needs: Yes

Serve low income children: Yes, 100%

Number of staff: 4

From their Application:

At this site, the parents have taken an interest in making improvements to the playground. A fundraiser has been hosted to support improvement; it was very much supported by the community. The staff has shown great interest in ensuring that as they work with the parent group they meet safety standards and have a high quality outdoor learning space.



Broken Bow—May, 2008



Balance Beam



Tree Trimmed for tree house



Cement removed—dirt in



Messy Area



Beginning of trail



Sand box & Dirt

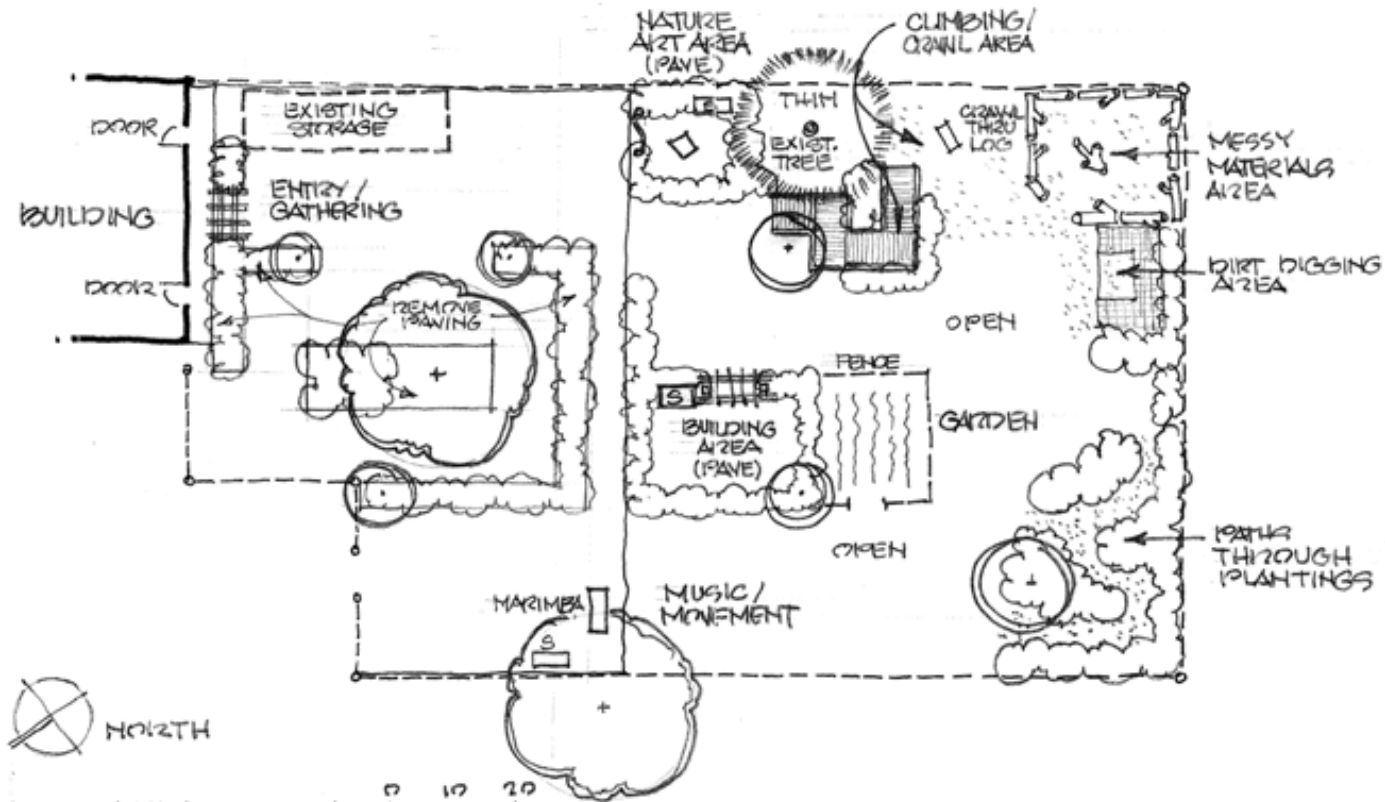


Swings removed—planters in



Horse removed—wheel art in





BROKEN BROW

PROGRAM SKETCH

1" = 20'

4.22.07